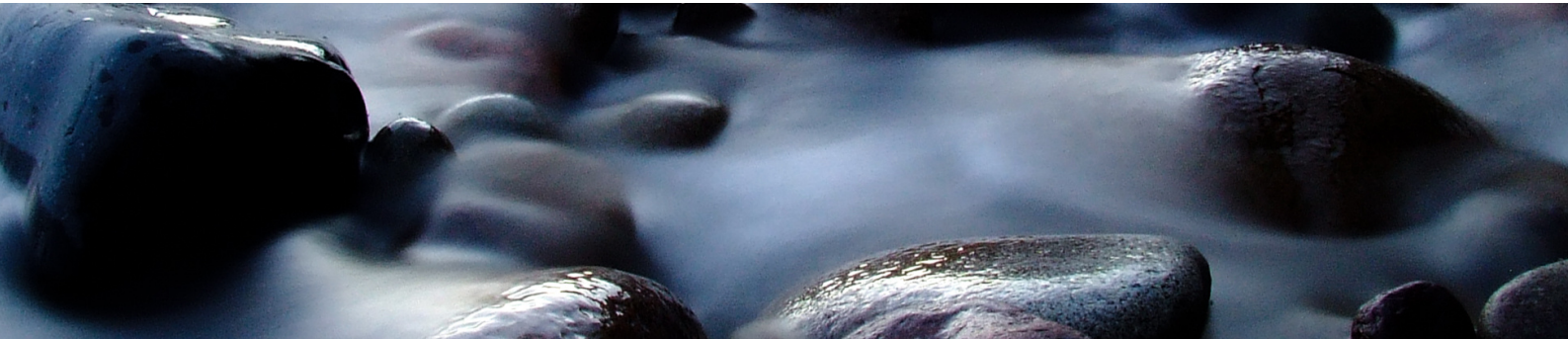


Waterfilter.direct

The Ultimate home water filtration solution



FILTERING YOUR WATER NATURALLY NOT CHEMICALLY

waterfilter.direct

1300 075 662

Perth
Brisbane
Sydney
Melbourne

WELCOME TO

Water Filter Direct

Water Filter Direct offer a comprehensive solution for providing clean filtered water throughout the home. Our Home Water Filtration Solutions can remove up to 99.99% of chlorine by-products and a range of other contaminants including Fluoride, Lead, PFA's, Arsenic, Sand, Rust and Cyst just to name a few, this will ensure that the water is not only safe to drink, but also free from harmful chemicals that can cause skin and lung irritation.

One of our unique focal points is delivering clean water to every part of the home, including showers and baths. This can be particularly important for people with sensitive skin or allergies to chlorine.

Additionally, Water Filter Direct emphasises the importance of providing clean water for pets as well, recognising animals can also be affected by contaminants in the water.

We are committed to providing a high-quality water filtration solutions to improve both health and water quality. Our free consultation and quote offer may be a good starting point for those looking to improve the water quality for the whole family including the dog.

WHY?

Water Filter Direct

The WFD fundamental difference

The combination of a industry leading products, a team of quality expert trades and a sales team with no salespeople, That's the fundamental difference with Water Filter Direct, you will only ever speak with a fully qualified plumber or plumbing consultant who knows the industry, understand your plumbing situation and water filter needs. We know our product, your product and every other water filter product on the market, not because we read a training manual or sales brochure but because we have installed, serviced, repaired or replaced what you currently have or what you're looking at purchasing. Speak with a subject matter expert, not a salesperson chasing commissions.

We are a family owned business with 30 years of industry knowledge based in WA servicing every State Australia wide.

OUR WHY

Purpose Over Profit

Water for people

With a long list of organisations worldwide doing their part for humanitarian aid, our company is honoured to stand alongside them.

We donate a portion of the profit from every sale, which means our donation supports and supplies sustainable fresh clean water and sanitation to those who are less fortunate spread across 9 different Countries

We are proud to be one of Australian first Water Filter Companies to place purpose over profit.

Join us in making a positive impact for the one billion people every year that are harmed by waterborne illnesses.

Our donations support innovative projects to build sustainable safe clean water and sanitation solutions.



water for people
EVERYONE • FOREVER

WATER FOR PEOPLE

CLUB

MONTHLY GIVING



WHY?

WHY NOT?



VORTEX-PRO

The 3 Stage Vortex pro Complete Home Filtration System (CHFS) ensures every tap in the home is protected, The health benefits alone are a good enough reason to install a Vortex pro, but above and beyond the health benefits the level of protection and elimination of corrosion and calcium deposits on your sinks, basins, tiles, shower and shower screens including extended life of your home appliances like your dishwasher, washing machine, kettle including your hot water system and associated plumbing and the list goes no.



It's clear the Vortex pays for itself.

WHIRLPOOL-PRO

The 3 Stage Whirlpool pro under sink fine filter system (USFS) comes standard with every Complete home filtration system (V6-PRO), This offers the ultimate protection without killing your water like the (RO) units do, known in the industry as "dead water" not fit for human consumption, The advanced coconut carbon block filter will even remove Fluoride, Lead, Arsenic and Chlorine just to name a few, The convenience of a filter tap at your kitchen sink makes life easy filling your kettle, pots and other large items, The Whirlpool pro can also service your fridge if you prefer, as most fridges today only have 1 filter and the option to removal Fluoride is very limited.



You can't put a price on health.



PERFORMANCE

While some companies claim to be the best in the business they struggle to hit the mark in multiple key aspects. Let's start with capacity, The Vortex Pro is equipped with 3 x 20 inch x 4.5 inch filters & filter housings giving you twice the surface area increasing filter life and water volume delivering more water on demand minimising to chance of pressure loss.

The robust design is equipped with more features as standard including a Stainless Steel frame structure with a integrated bracket system complete with a Stainless Steel cover to protect your investment from the harsh Australian conditions. We have taken the guesswork out by equipping the Vortex Pro with 3 Stainless Steel pressure gauges so you can pinpoint any major pressure loss. All 9 housing connections are manufactured with solid brass inserts to protect the housing from splitting and to finish it off each housing is fitted with dual o'rings offering faultless water seal every time.



Longevity comes from design



UNBEATABLE

Second to none stainless steel is the premium material of choice when exposed to the elements, Time tested we know our products durability is unmatched delivering a trouble free system promoting longevity and sustainability, Very few products on the market today offer a level of quality that's consistent from end to end, some companies believe placing a fancy cover over a substandard powder coated frame fitted with undersize filters has the customers best interests at heart. We know in 50 years time our stainless steel robust design will still be protecting your water filter system as the day it was installed.

Quality design from quality materials



UNDER THE HOOD

Take off the cover and you will see the level of quality is consistent with a robust design stainless steel frame construction and integrated bracket system, The rigid design adds next level protection to your water filter system reducing movement on water connections, reducing the risk of cracked fittings or housings. The solid design allows easy installation for any situation from your garden bed to your garage wall and everywhere in between, It also reduces installation time and costs. But it's the systems capacity and performance that will bring a smile to anyone's face, with 3 x 20 inch x 4.5 inch filter housings you can be confident the Vortex-Pro will deliver maximum filter performance without affecting your flow.

Not undersized or oversized, The right size

PERFORMANCE

The 3 liquid filled stainless steel pressure gauges will help you understand and pinpoint any reduction in pressure loss across all 3 stages of your filter system, This also helps determine if your filters are ready for replacement. Just like every aspect of the Vortex-Pro we don't cut corners or do things by halves, if it's a 3 stage filter system it should have 3 gauges.

More features as standard



ROBUST DESIGN

Manufactured with brass bushing isn't an option , it's a necessity, We know from industry experience water filter housings without brass bushing will crack over time, Reducing the overall life of your water filter system. Sometimes it's just the little things that make a big difference. By keeping the level of quality consistent from end to end you can be more than confident your investing in the right product that will give you reliability and longevity.

Mitigate risk, We know it will happen!





TECHNOLOGY IS KEY

The CBF Series cartridges are highly effective in reducing, taste, odour, chlorine, and sediment. Cyst and heavy metal removal. Just because a filter is made from 100% coconut carbon doesn't mean to say it's high quality. The processing technology is the key component. Our carbon block filters are made with sintering high purity HAYCARB powdered activated carbon, German made Celanese UHMWPE (ultra-high molecular weight polyethylene). Filters offer ultimate adsorption and chlorine removal capacity • Designed for mains water and tank water supplies. - Features Silver impregnated Antibacterial Technology. - Premium bindings in carbon cartridges. - Superior contaminant capacity. - High flow rates up to 75 litres/minute. - Longer cartridge life. - Reduces chlorine, bad taste, odour but most impressively combats your hard water problems naturally not chemically.

DUAL O-RING DESIGN

Just like brass bushing the dual o-ring system is not an option but a necessity. Small leaks turn into big leaks, Just like the old tap washer and dripping tap, the leak starts off slow and as the days and weeks roll on the leak becomes bigger. It might just be a small drip on the outside but on the inside the water is slowly cutting a small groove in your tap set and if left long enough the tap set maybe beyond repair. Well the same goes with your water filter housing, so to mitigate risk and to increase the overall life of your system we have made the dual o-ring design a standard feature delivering an unmatched product to market.

Quality innovative design comes first

5 MICRON WASHABLE SEDIMENT FILTER

Reduces sediment, dirt, rust, algae, turbidity and other particulate contaminants. Our Sediment Filters are manufactured from pure 100% polypropylene fibers. The polypropylene construction provides superior chemical resistance and does not breed bacteria.

1 MICRON ANTIBACTERIAL SEDIMENT FILTER

Reduces sediment, dirt, rust, algae, turbidity and other particulate contaminants. Nano silver Polypropylene (PP) Sediment Filters are coated with 500ppm Nano Silver Solution and constructed by using multi-layers for antibacterial effects and superior depth filtration. The graded density construction captures particles throughout the entire cross section of the cartridge and reduces surface binding. Typically ideal for aggressive chemicals and general filtration requirements when depth filtration is required.

0.5 MICRON ANTI SCALE CARBON BLOCK FILTER

Remove sediment, particles, chemical, **Scale** and some colour extraction. Slight taste achieved. Our World leading German technology Carbon Block Filters are manufactured using a powdered COCONUT activated carbon with a specially designed adsorbent media for chemical and reduce chlorine taste & odour and other contaminants. 0.5 Micron carbon block cartridges help reduce sediment and lime scale buildup.



5 Micron Washable Sediment Filter



1 Micron High Flow Sediment Filter



0.5 Micron Anti Scale Carbon Filter



LIMITLESS

The 3 stage Under sink Quick Change Water Filter System offers the next level of protection eliminating harsh chemicals like Fluoride and Lead, but you wouldn't expect anything less in the kitchen as this is the water you consume and cook with. You also have the option to connect this system to your fridge if you prefer. The Quick Change design makes filter change easy eliminating water spillage in your cupboards. The Whirlpool-Pro completes the final 3 stages of protection of the 6 stage V6-MAX Complete Home Filter System.

- 1 m Antibacterial Sediment Filter x 1
- 0.5 m Coconut Carbon Block Filter(Nano Silver)
- 0.5 m Coconut Carbon Block Filter (Lead Fluoride) Silver Alkaline Carbon Filter option



SOLID STAINLESS STEEL 304

Most kitchen taps are made from brass, finished with chrome to prevent corrosion of the material. Due to the greasy dirt and oil contamination in kitchens, brass taps are not always the best option. Some Brass tapware contains 1%-5% LEAD material and can gradually release LEAD in to your drinking water. This high risk exposure may contribute to mental and physical illness, especially for kids. Scientific research revealed LEAD pollution may also affect reproductive ability, liver function and your psychological system.

The Whirlpool-Pro Stainless steel filter tap is LEAD FREE, non corrosive, odorless and anti-polluted, this removes the risk of pollution to your final stage of water filtration before consuming.

As noted previously it's the little things that make a big difference, Water Filter Direct have gone above and beyond to bring a premium product to market giving you the end user piece of mind.

V6-MAX CHFS

The combination of the Vortex-Pro and Whirlpool-Pro offer the the best of both worlds delivering Hi-flow mains pressure filtered water to the entire home with it's 3 Stage 20 inch x 4.5 inch configuration, finishing off in your kitchen with the 3 Stage Quick Change setup removing those finer contaminants like Lead and Fluoride. Both systems have multiple filter options but as standard we offer the best filters across all 6 Stages with our end goal in mind to deliver the best quality water to every part of your home.

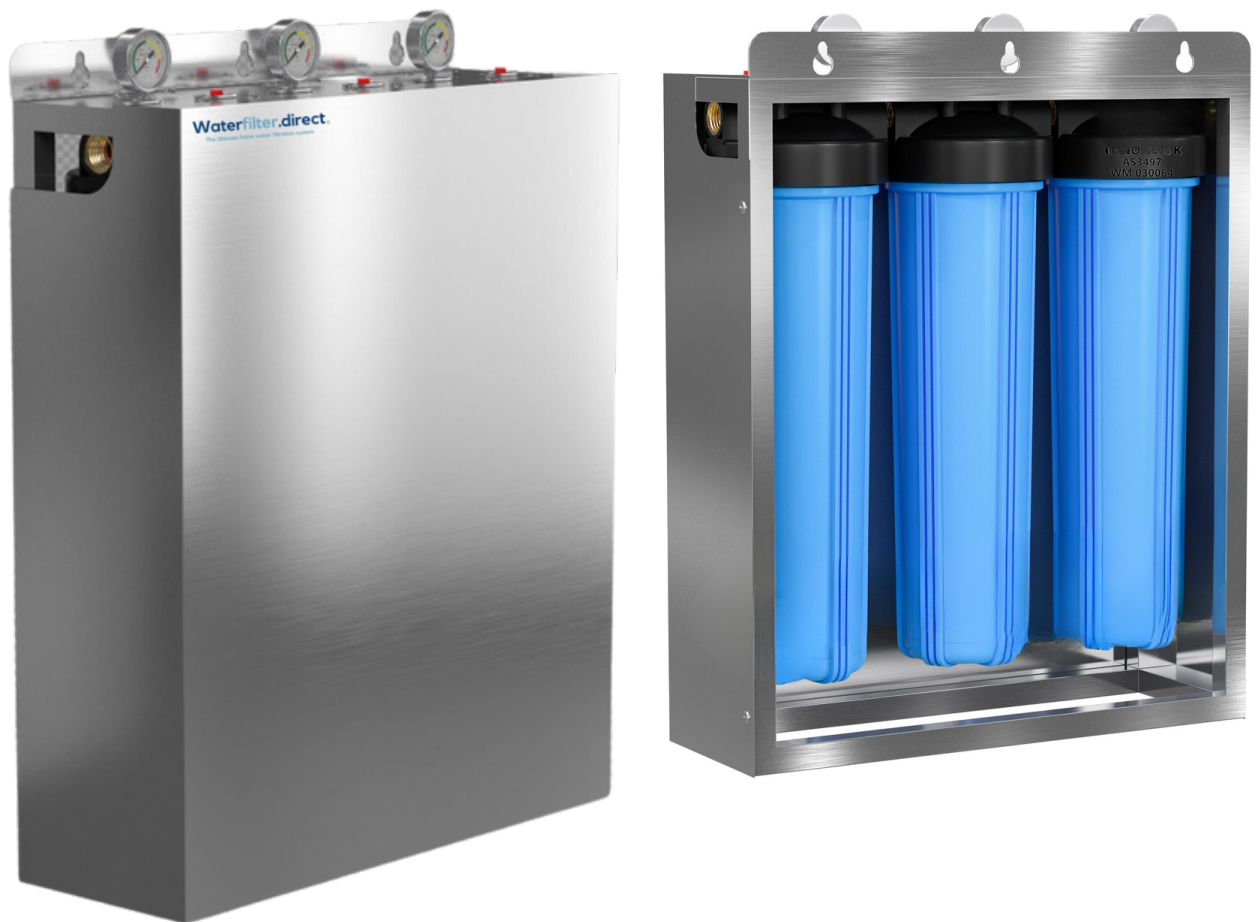
Water is Life, do it once and do it right



Vortex-Pro 3 Stage

Complete home water filtration system

RRP \$1,765.00



Supply and installation RRP \$2,815.00



WaterMark

WaterMark Australian Standard AS3497

Whirlpool-Pro 3 Stage

Under sink water filtration system

- RRP \$295.00



Supply and installation RRP \$595.00



WaterMark Australian Standard AS3497

V6-Pro 6 Stage

Complete home water filtration system + under sink

- RRP \$2,060.00



Supply and installation RRP \$3,260.00+Filter kit



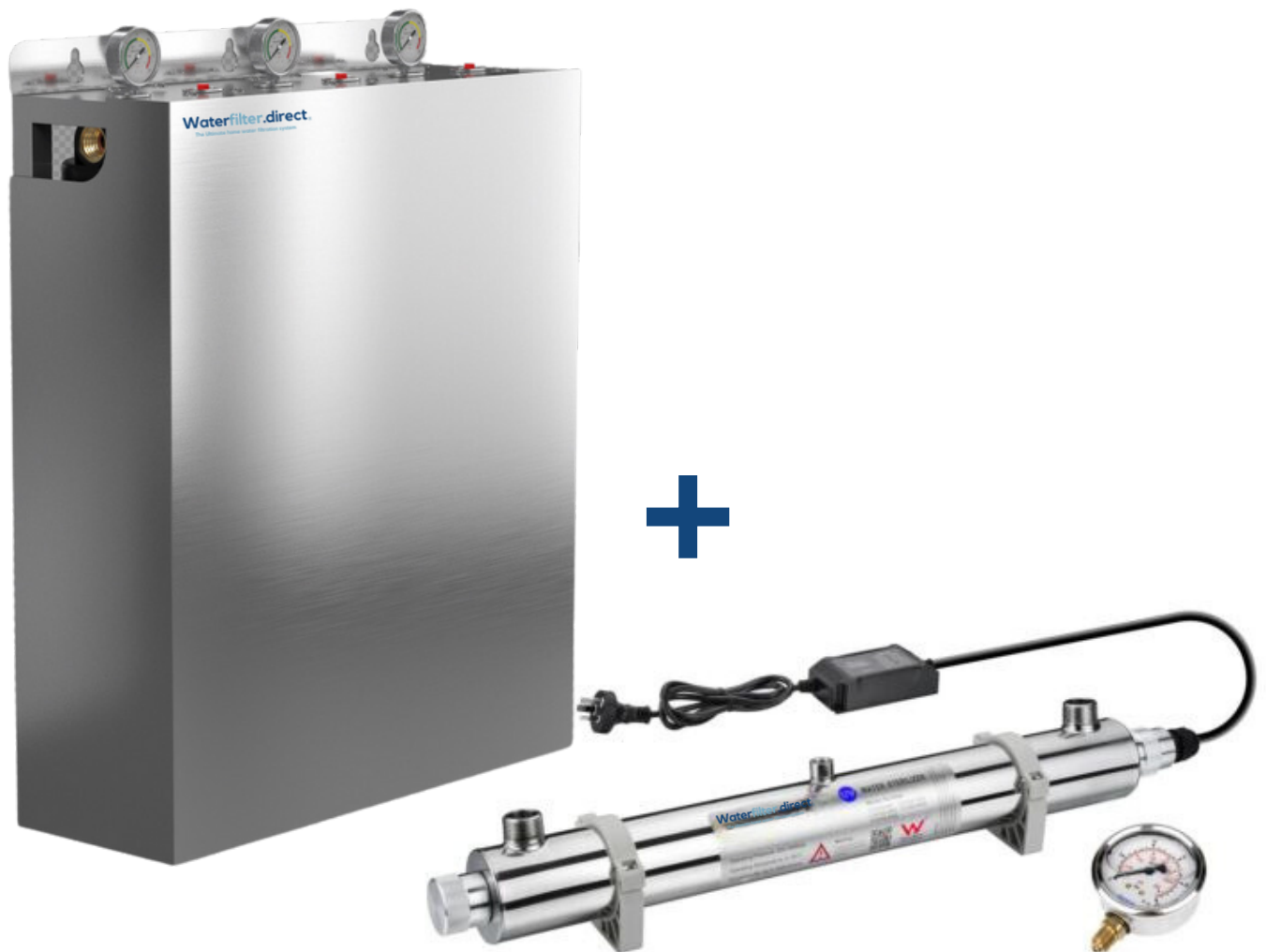
WaterMark

WaterMark Australian Standard AS3497

Vortex-UV-Pro 4 Stage

Complete home water filtration system with UV protection

- RRP \$2,345.00



Supply and installation RRP \$3,545.00+Filter kit



WaterMark

WaterMark Australian Standard AS3497

Vortex-UV-Max 7 Stage

Complete home water filtration system with UV protection

- RRP \$2,645.00



Supply and installation RRP \$4,045.00+Filter kit



WaterMark

WaterMark Australian Standard AS3497

Whirlpool-RO 5 Stage

Under sink Alkaline + Reverse Osmosis filtration system

- RRP \$455.00



Supply and installation RRP \$855.00



WaterMark Australian Standard AS3497

Whirlpool-RO 7 Stage

Under sink Alkaline + Hydrogen Reverse Osmosis filtration system

- RRP \$655.00



Supply and installation RRP \$1,055.00



WaterMark Australian Standard AS3497

Vortex-Pro

Trade Installation kits

- K1 \$249.00
- K2 \$275.00
- K3 \$299.00
- K4 \$320.00

Everything in one box, to install your next water filter system..... like a Pro



Waterfilter.direct

The Ultimate home water filtration solution

*For our full range, product brochure or
advice regarding your water filter needs
Get in touch today*

Contact



1300 075 662



admin@waterfilter.direct



waterfilter.direct



WaterMark Australian Standard AS3497